

CA-295 RELAY TRANSFORMER

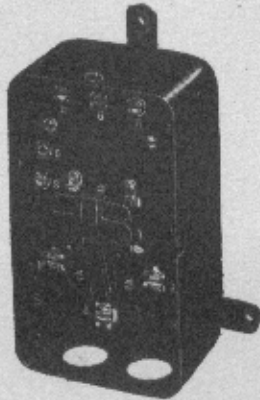


Fig. 1 - CA-295

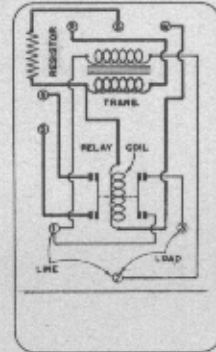


Fig. 2 - Internal Wiring

The CA-295 Relay-Transformer combines a step-down transformer and low voltage pilot relay which operates two separate contact structures. One contact structure is a single pole, single throw, double break line voltage switch for handling line voltage loads such as hot water circulators, furnace fans, etc. The other contact structure (a single pole, single throw, low voltage switch) closes and opens the pilot circuit of the Primary Control, Stoker Timer, Gas Valve, etc., simultaneously with the starting and stopping of the circulator or blower. The terminals for the pilot circuit are located at the upper left side of the relay panel and are marked "S" and "S".

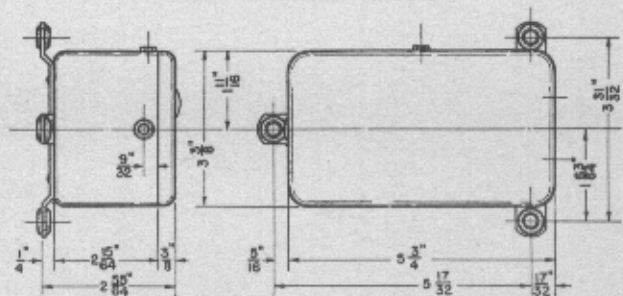
Thermostat Terminals for the No. 411-CH Low Voltage Thermostat are provided at the top of the relay panel (identified as "R" "G" and "W"). Line and load terminals for line voltage connections are located at the bottom of the panel, with generous space for wiring.

Transformer built into this unit incorporates an air cooled core and is designed for long life. Secondary output of the transformer is well in excess of the maximum required for any standard circuits.

SPECIFICATIONS

Switch	Load Circuit	Pilot Operating Circuit	Transformer
Line Voltage (Load) Single Pole, Single Throw	1 H. P. Max. 10 Amps. A. C. Non-Ind.	Std. 24 V. 60 C. Available odd frequencies at slight additional cost	Std. 110/24 V. 60 C. Available 220/24 V. and for odd frequencies at slight additional cost
Low Voltage (20-24 V. Pilot) Single Pole, Single Throw .2 Amp. Max.			

DIMENSIONS



DETROIT LUBRICATOR COMPANY

ESTABLISHED 1877

MAIN OFFICE AND FACTORY

5900 TRUMBULL AVENUE, DETROIT, MICHIGAN, U. S. A.