

"GENUINE DETROIT"

CA-807 WARM AIR LIMIT CONTROL

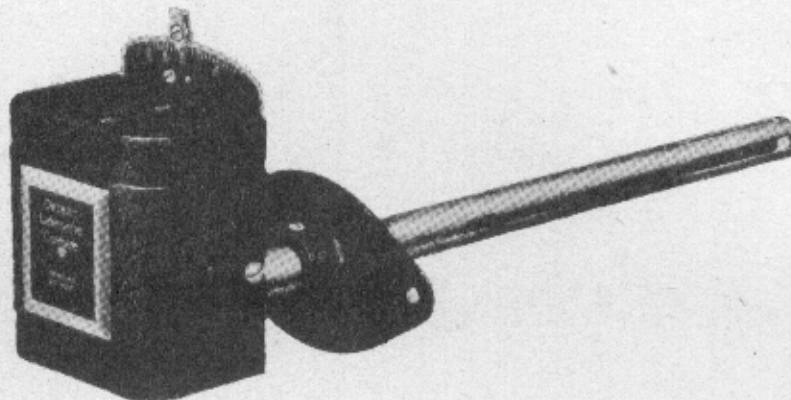


Fig. 1 - CA-807

The CA-807 Air Limit Control is of sturdy and compact construction, designed to break circuit on an increase in temperature, and is suitable for either line or low voltage. If the air in the plenum reaches the pre-determined temperature for which the control is set, the CA-807 will automatically stop the firing device thereby preventing excessive plenum temperature and possible resultant damage.

The CA-807 is actuated by an accurate and durable bi-metal element which is enclosed in a protecting sleeve. The range is readily adjustable by means of an outside lever and calibrated scale plate.

Temperature Range: 100° to 350°.
 Temperature Differential: 18° non-adjustable.
 Electrical Rating: 1 H.P. 115-230 Volts A.C.
 Cut-out temperature indicated on scale.
 Cut-in temperature equals cut-out temperature minus the differential.

SETTING THE CONTROL

The CA-807 is set at the factory at 250°.

This setting conforms with most local codes. If a higher setting is

needed, and local codes permit, remove the adjustment stop and move the adjusting lever at the top of the Control to the desired temperature. The temperature scale and pointer indicate the cut-out point of the switch. Changing this range adjustment does not affect the differential.

LOCATION

Select a location in the plenum or duct which will assure average temperatures and free circulation of air around the bi-metal coil, and cut a 3/4" round hole.

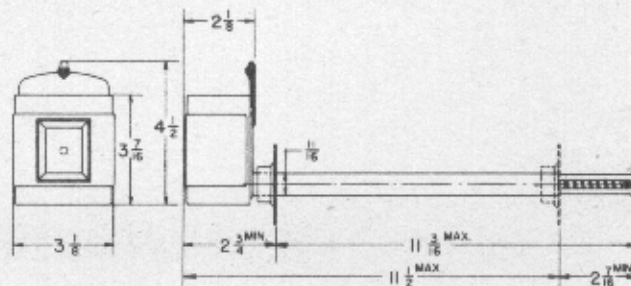


Fig. 2 - Dimensions

To install the CA-807 attach the mounting flange, using the sheet metal screws furnished. Then place the shank of the Control through the opening, making sure the bi-metal coil does not meet any obstruction and is free to operate, and tighten the set screw in the flange

to hold the instrument firmly in place at the proper position. It is not necessary that the Control be mounted exactly level or vertical.

use a standard adapter. Unscrew binding screws until wire connection can be made, bend ends of wires around screws and tighten down.

WIRING

If BX is used prepare as shown (Fig. 3) by removing three inches of armor, then remove one inch of insulation from ends of wires. If Greenfield is used, allow 3 inches as indicated and

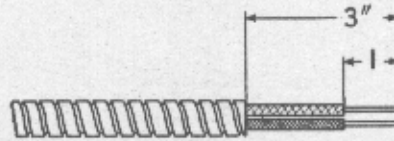


Fig. 3

"GENUINE



DETROIT"

DETROIT LUBRICATOR COMPANY

ESTABLISHED 1877

MAIN OFFICE AND FACTORY

5900 TRUMBULL AVENUE, DETROIT, MICHIGAN, U. S. A.

SALES OFFICES AND REPRESENTATIVES

40 WEST 40TH ST.	- - -	NEW YORK, N. Y.	4401 STANFORD STREET	- - -	DALLAS, TEXAS
1003 STATLER BLDG.	- - -	BOSTON, MASS.	PRIOR AND MINNEHAHA STS	- - -	ST. PAUL, MINN.
2212 WALNUT ST.	- - -	PHILADELPHIA, PA.	4550 MAIN ST	- - -	KANSAS CITY, MO.
837 OLIVER BLDG	- - -	PITTSBURGH, PA.	500 CENTRAL SAVINGS BANK BLDG.	- - -	DENVER, COLO.
816 SO. MICHIGAN AVE.	- - -	CHICAGO, ILL.	153 W. SECOND ST., SO	- - -	SALT LAKE CITY, UTAH
1205 UNIVERSITY DRIVE N. E.	- - -	ATLANTA, GA.	311 PACIFIC BLDG.	- - -	PORTLAND, OREGON
4201 DUNCAN AVE.	- - -	ST. LOUIS, MO.	2615 FIFTH AVE.	- - -	SEATTLE, WASH.
		320 CROCKER ST.	- - -		LOS ANGELES, CALIF.

CANADIAN REPRESENTATIVE—RAILWAY AND ENGINEERING SPECIALTIES, LIMITED, MONTREAL, TORONTO, WINNIPEG