

CA-810 and CA-811 Blower Controls

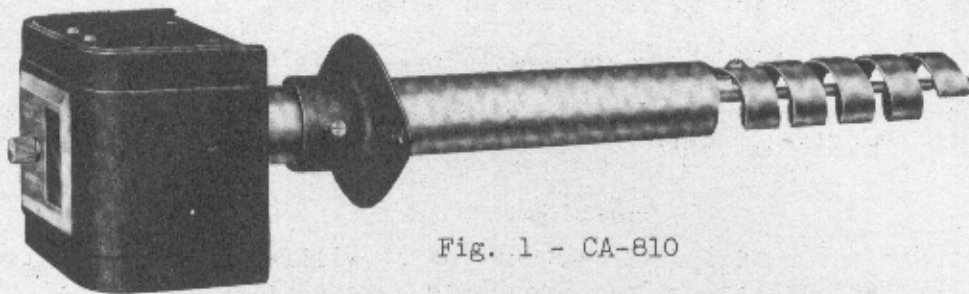


Fig. 1 - CA-810

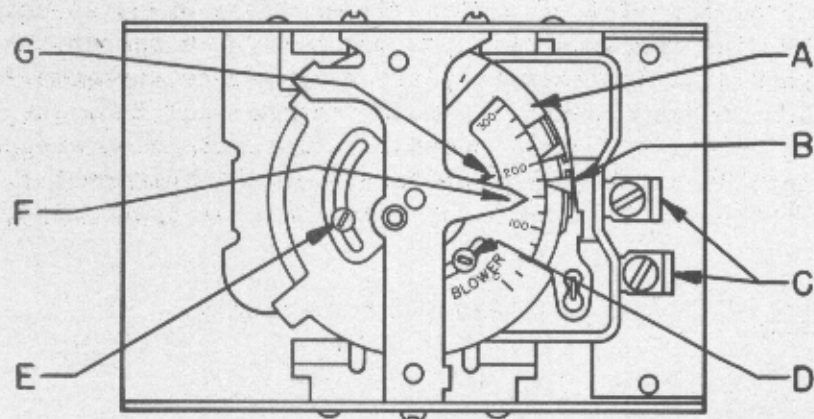
The CA-810 and CA-811 Blower Controls are of compact and sturdy construction, for line voltage blower control, and are identical except for insertion length and method of mounting.

The CA-810 is provided with a flat mounting flange and the insertion length is adjustable from 4-7/16" to 10-13/16".

The CA-811 mounts directly on the plenum or duct and has an insertion length of 6-7/16".

The Blower Switch - terminals of which are shown at "C", Fig. 2 - breaks circuit on a decrease in temperature and makes circuit on an increase in temperature. It automatically controls the blower to prevent circulation of unheated air.

On both controls the Range and Differential are adjustable: Range, 75° to 275°; Differential, 18° to 100°.



- | | |
|-------------------------------------|------------------------------------|
| A. Maximum Setting Stop | D. Scale Plate Lock Screw |
| B. Blower Indicators | E. Maximum Setting Stop Lock Screw |
| C. Blower Switch Terminals | F. Pointer |
| G. Maximum Setting Indicating Arrow | |

Fig. 2

Setting the Control

The CA-810 and CA-811 are factory set to open circuit at 115° and close circuit at 145°.

If it is necessary to change these settings, the indicators "B" may be moved with the fingers or a screw driver to the desired cut-in or cut-out settings as shown on the scale.

Part "A" is a maximum stop for blower switch setting. It is set at the factory at 175°. This stop may be changed by loosening screw "E" and moving stop "A" to the desired point as indicated by arrow "G".

Plenum Temperature Indicator

The pointer "F" indicates on the scale directly behind it the approximate temperature of the bi-metal coil.

Location

Select a location in the plenum or duct which will assure average temperatures and free circulation of air around the bi-metal coil, and cut a 1-1/4" round hole.

To install the CA-810, attach the mounting flange, using the sheet metal screws furnished. Then place the shank of the control through the opening, making sure the bi-metal coil does not meet any obstruction and is free to operate, and tighten the set screw in the flange to hold the instrument firmly in place at the proper position. It is not necessary that the Control be mounted exactly level or vertical.

To install the CA-811, remove the cover and after inserting the shank through the 1-1/4" hole, secure the case directly to the plenum or duct by means of sheet metal screws through the slots provided in the back of the case.

Calibration

If, because of rough handling or abuse, it is desired to check the calibration of the Control, proceed as follows:

Remove the Control from the plenum and immerse the bi-metal coil in water of approximately 150°, as measured by a thermometer. The temperature indicated by pointer "F" should be approximately the same as the thermometer reading. If necessary, calibration may be made by removing the seal from the head of screw "D", loosening screws "D" and "E" and rotating the calibrated scale plate until pointer "F" indicates the same temperature as the thermometer. Then tighten screw "D" to hold the new setting. Adjust maximum stop and tighten screw "E".

Electrical Rating: 1 H.P. 115-230 Volts A.C. only.

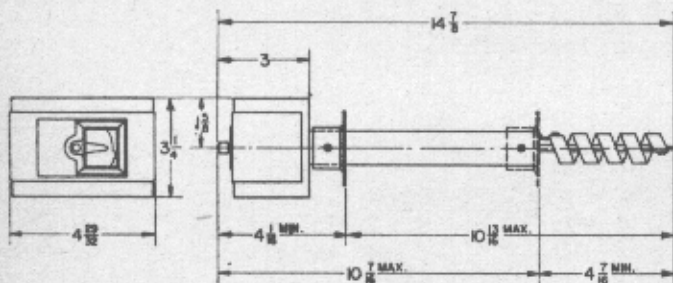


Fig. 3 - CA-810

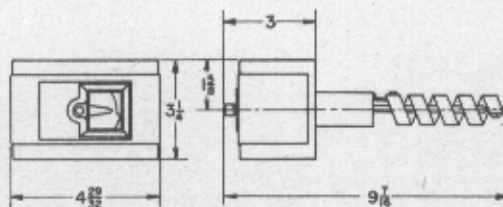


Fig. 4 - CA-811

DETROIT LUBRICATOR COMPANY

ESTABLISHED 1877

MAIN OFFICE AND FACTORY

5900 TRUMBULL AVE., DETROIT, MICHIGAN, U. S. A.